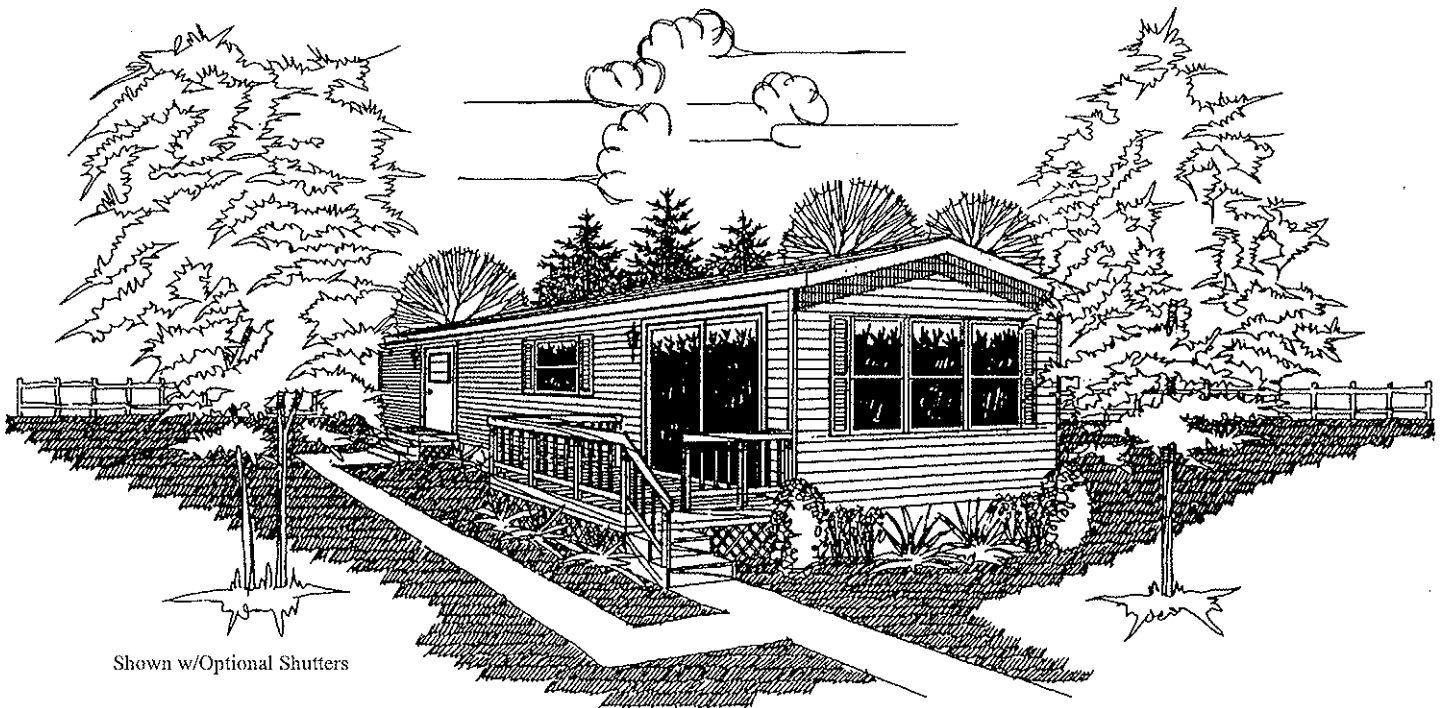


# Cutlass®

## 12 Series Floor Plans



Shown w/Optional Shutters

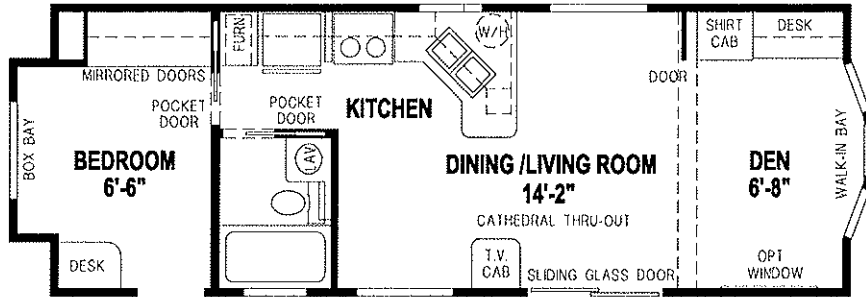
Your local Cutlass® dealer is:



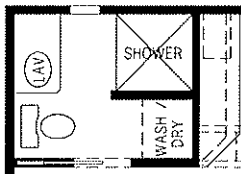
**SKYLINE®**

BRINGING AMERICA HOME. BRINGING AMERICA FUN.

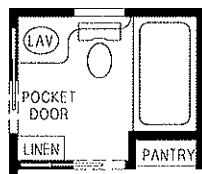
# 12 Series Cutlass®



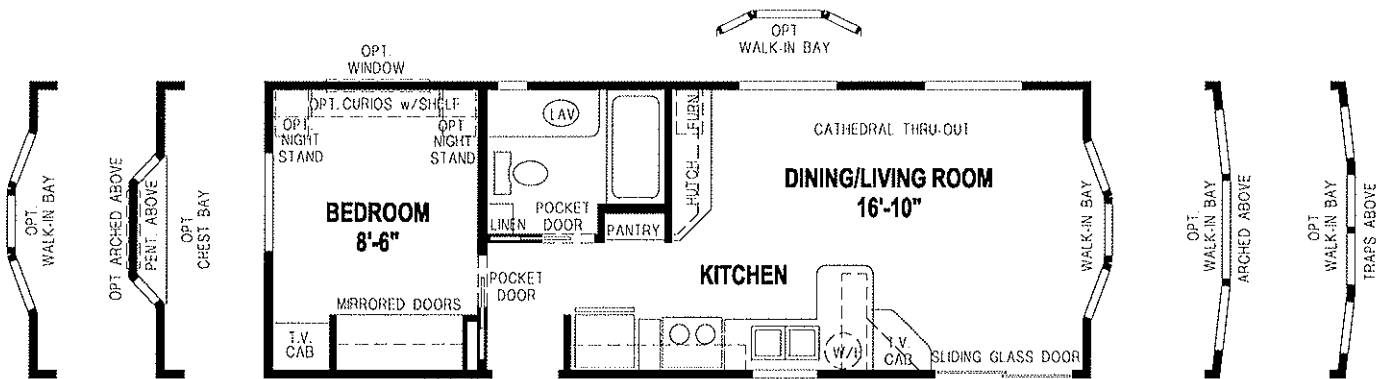
**5225CTH/32'-2"12 1BEDROOM - CATHEDRAL THRU-OUT**



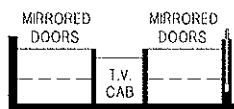
**OPTION WASH/DRY BATH**



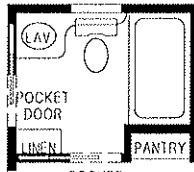
**ALTERNATE BATH**



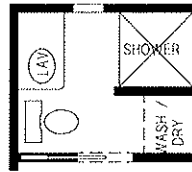
**5207CTH/32'-8"12 1BEDROOM - CATHEDRAL THRU-OUT**



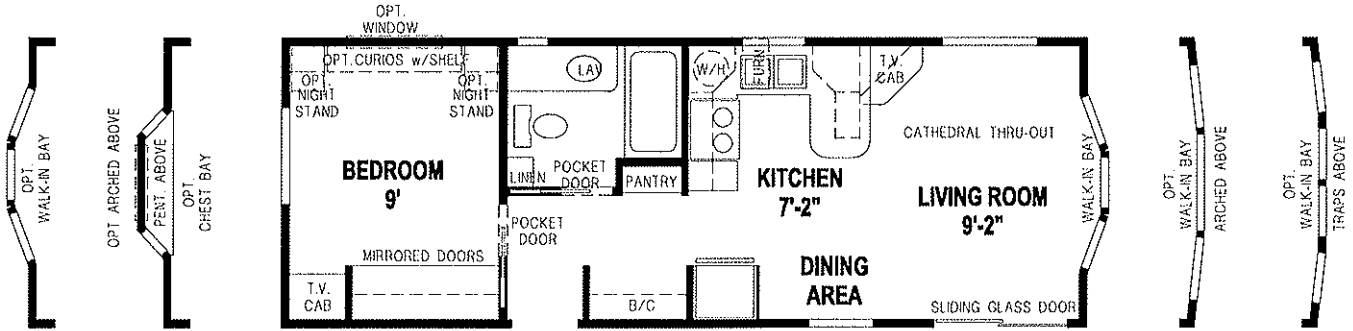
**ALTERNATE WARDRODE**



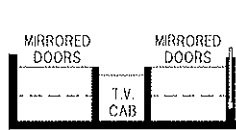
**ALTERNATE BATH**



**OPTION WASH/DRY BATH**



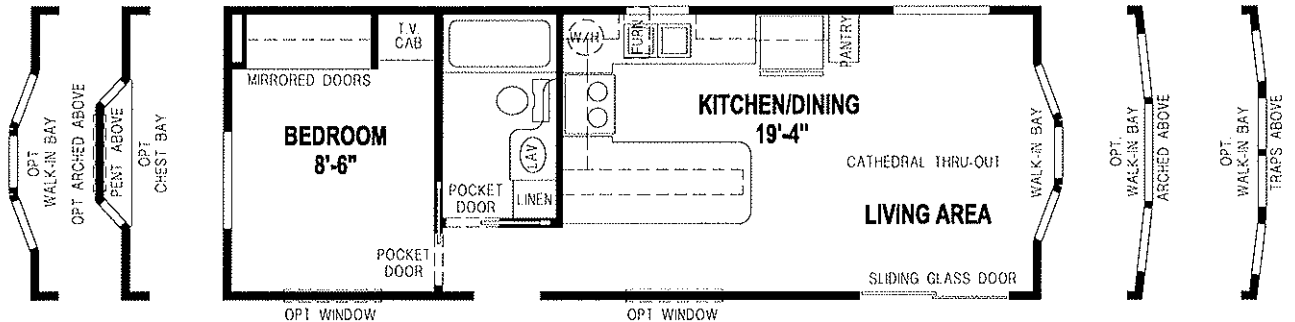
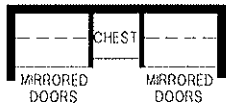
**5210CTH/32'-8"12 1BEDROOM - CATHEDRAL THRU-OUT**



**ALTERNATE WARDROBE**



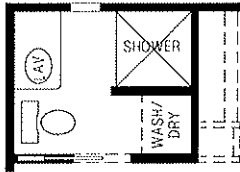
**ALTERNATE WARDROBE**



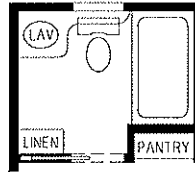
**5220CTH/32'-8"12 1BEDROOM - CATHEDRAL THRU-OUT**

FLOOR PLANS AVAILABLE FLIPPED SIDE-TO-SIDE

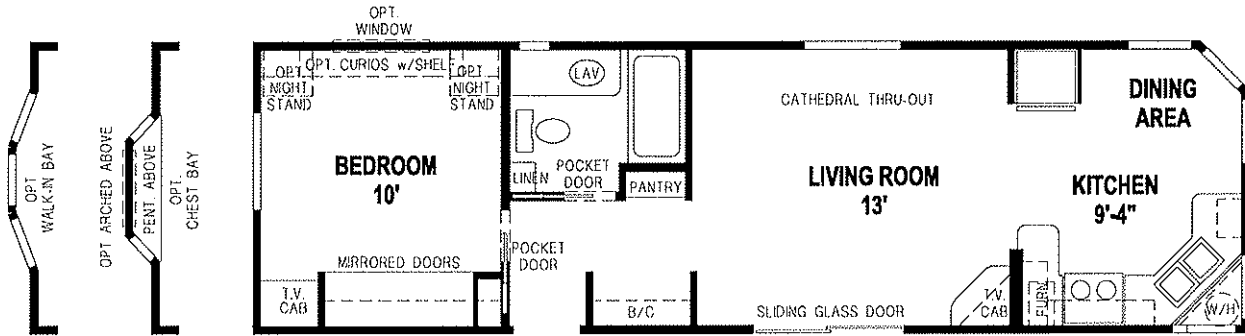
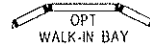
# 12 Series Cutlass®



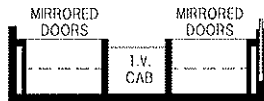
**OPTION WASH/DRY BATH**



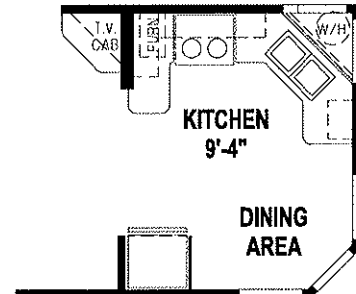
**ALTERNATE BATH**



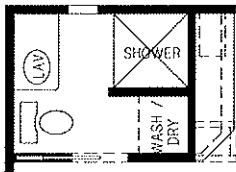
**5216CTH/4012 1BEDROOM - CATHEDRAL THRU-OUT**  
(ALSO AVAILABLE AS 38' LONG MODEL)



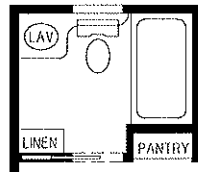
**ALTERNATE WARDROBE**



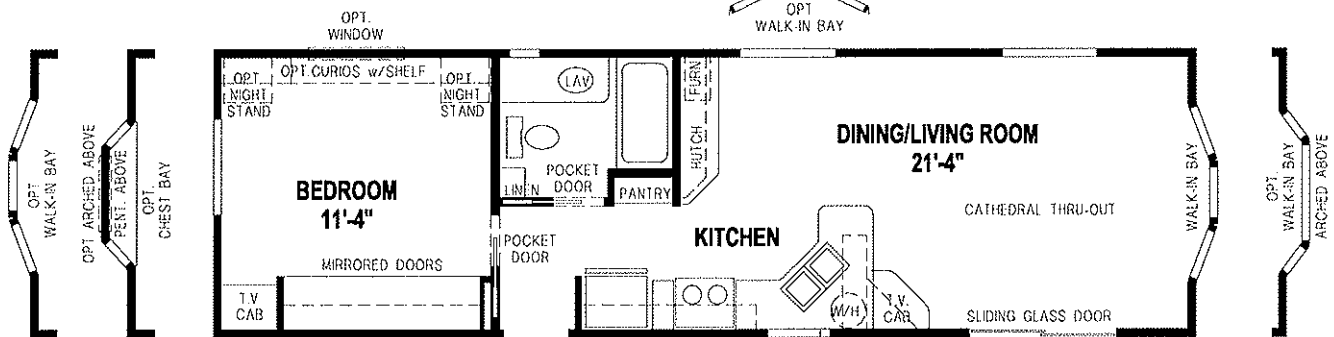
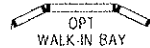
**ALTERNATE KITCHEN**



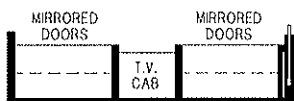
**OPTION WASH/DRY BATH**



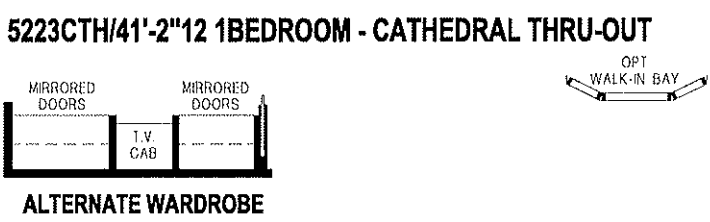
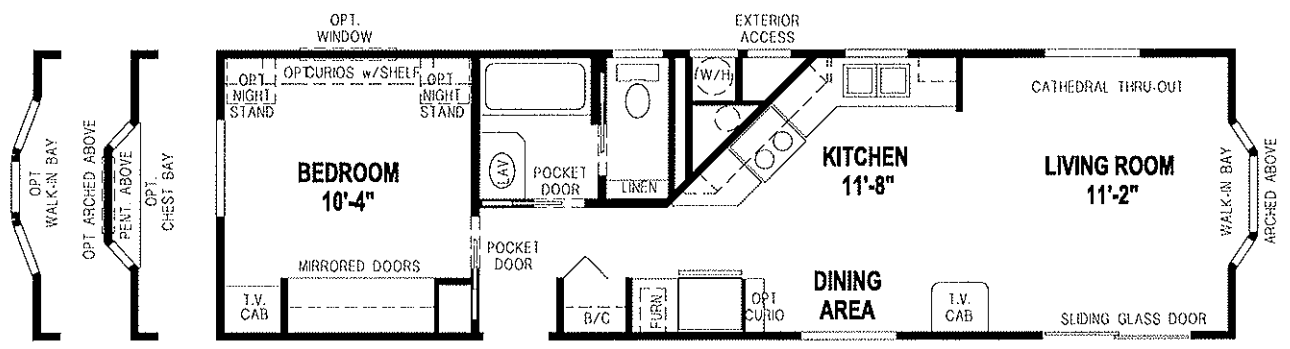
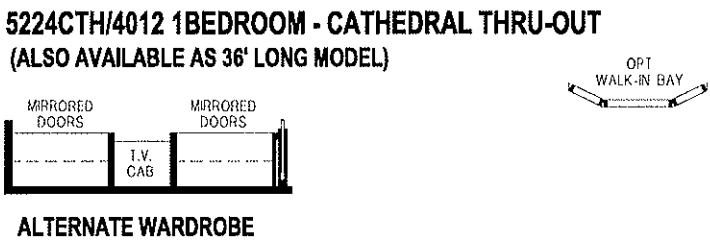
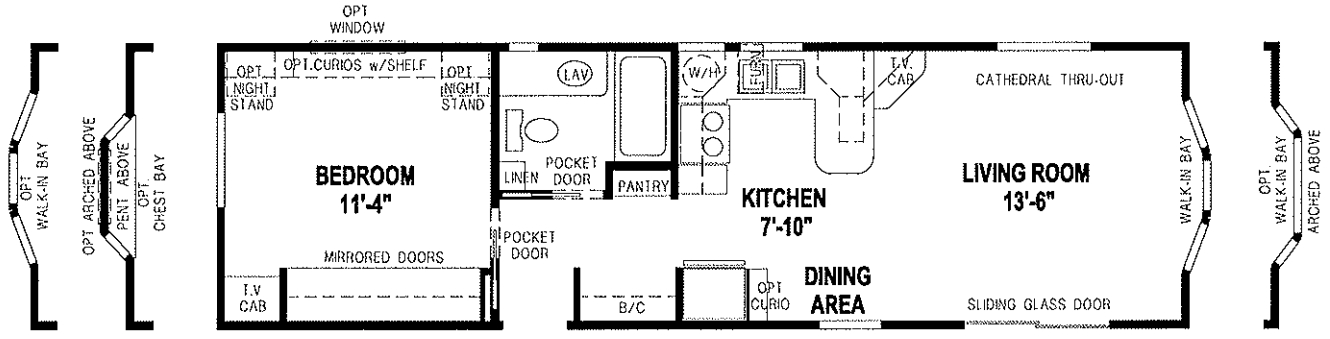
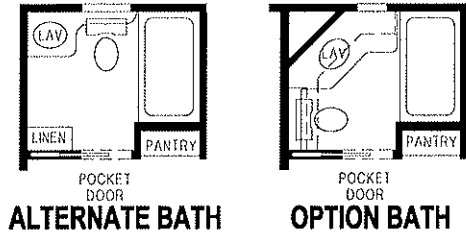
**ALTERNATE BATH**



**5209CTH/4012 1BEDROOM - CATHEDRAL THRU-OUT**  
(ALSO AVAILABLE AS 36' LONG MODEL)

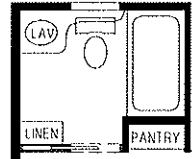


**ALTERNATE WARDROBE**

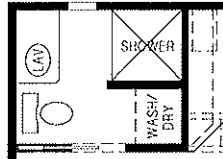


FLOOR PLANS AVAILABLE FLIPPED SIDE-TO-SIDE

# 12 Series Cutlass®



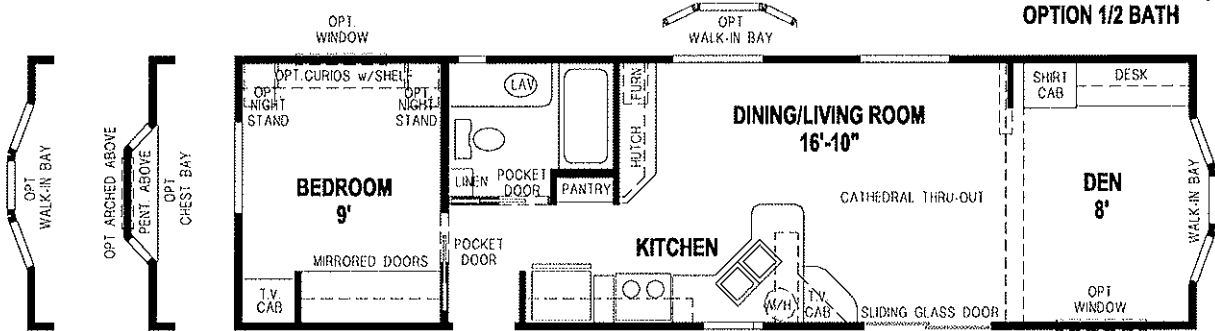
**ALTERNATE BATH**



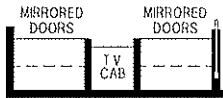
**OPTION WASH/DRY BATH**



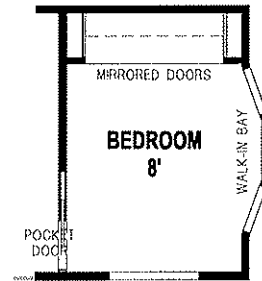
**OPTION 1/2 BATH**



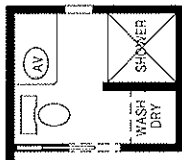
**5217CTH/41'-2"12 1BEDROOM - CATHEDRAL THRU-OUT**



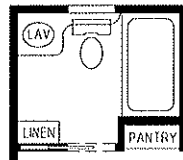
**ALTERNATE WARDROBE**



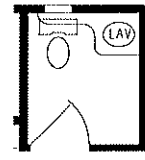
**OPTION BEDROOM**



**OPTION WASH/DRY BATH**



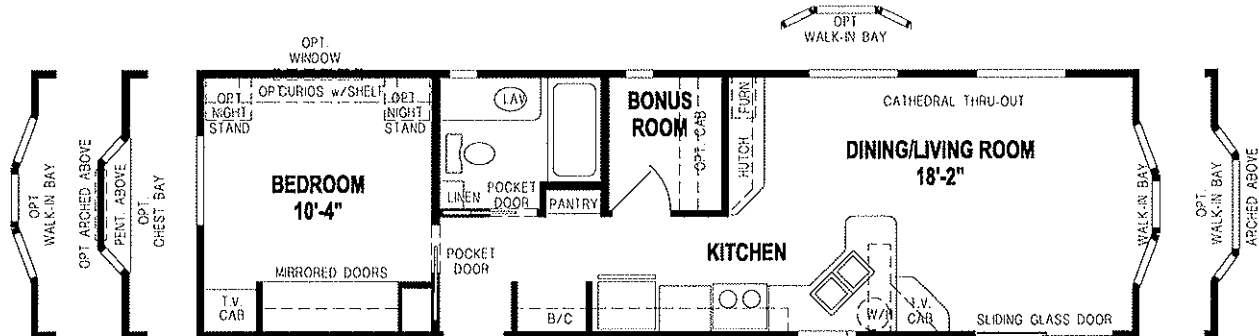
**ALTERNATE BATH**



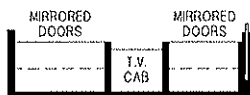
**OPTION 1/2 BATH**



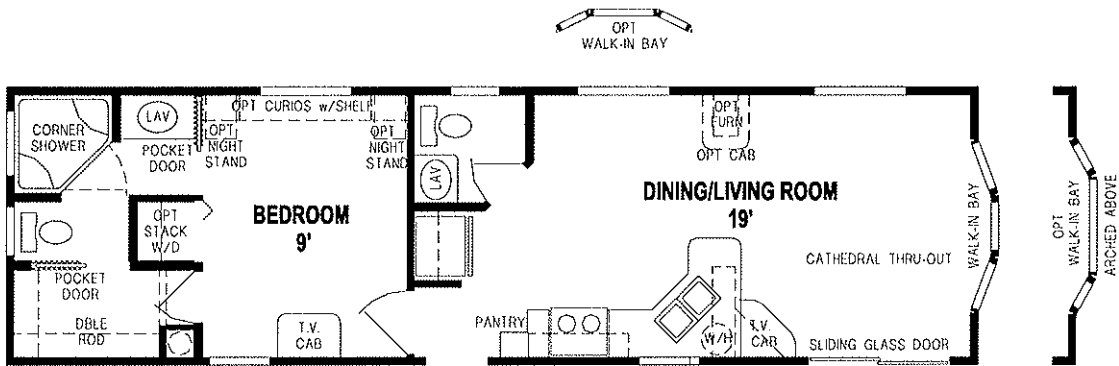
**OPTION UTILITY**



**5218CTH/41'-2"12 1BEDROOM - CATHEDRAL THRU-OUT**



**ALTERNATE WARDROBE**



**5226CTH/41'-2"12 1BEDROOM - CATHEDRAL THRU-OUT**

# Cutlass®

## 12 Series

### Standard Features

#### LIVING AREAS

- Upgrade Carpet
- Drapes w/Mini-Blinds
- Wainscot w/Chair Rail
- Large Cove at Ceiling
- Phone Jack
- TV Jack
- Chandelier Dining Light
- Vertical Blinds at Sliding Glass Door

#### KITCHEN

- Raised Panel Cabinet Doors w/Hardware & Residential Hidden Hinges
- Drawer Over Door Base Cabinet Construction
- Lined Overhead Cabinets w/Adjustable Shelves
- Two Shelves in Base Cabinet
- Counter Top Ceramic Tile Backsplash (Single Row)
- Single Lever Faucet at Sink w/Sprayer
- 18 Cu. Ft. Double Door Frost Free Refrigerator
- 30" Gas Range w/Lighted Power Hood
- Valance w/Mini-Blinds
- Marble Window Sill at Sink
- Large Cove Above Cabinets

#### BATHROOMS

- Raised Panel Cabinet Doors w/Hardware & Residential Hidden Hinges
- Medicine Cabinet w/Decorative Mirror
- Fiberglass Tub w/Full Surround
- Lav. Top Ceramic Tile Backsplash (Single Row)
- Single Lever Faucet
- Privacy Locks
- Towel Bar & Paper Holder
- Power Vent Fan w/Light
- Elongated China Commodes
- China Sink w/Overflow & Pop-Up Drain

#### BEDROOMS

- Upgrade Carpet
- Drapes w/Mini-Blinds
- Mirrored Wardrobe Doors w/Drawers Below
- Ventilated Wire Shelving
- Phone Jack
- TV Jack

#### ADDITIONAL FEATURES

- Cathedral Ceiling Throughout
- Wire for Paddle Fan
- Shingle Roof w/Ridge Cap
- 25 Year Shingles
- Vinyl Lap Siding
- Water Shut-off Valves Throughout
- Textured Ceiling
- Detachable Hitch
- Carpet Pad w/Tack Strip
- Gas Furnace
- 20 Gal. Water Heater
- Delta Faucets Throughout
- ½" Jalousie Rear Door w/Drape
- Deadbolt at Rear Door
- Sliding Glass Door (Insulated)
- Single Hung Vinyl Windows (Hud Only)
- Egress Windows in Bedrooms
- Insulation: R-38 Roof, R-33 Floor, R-11 Walls — HUD Only (R-19 Roof, R-11 Floor, R-11 Walls — ANSI) The Higher the "R-Value" the Greater the Insulation Power
- 7'-6" Sidewall Height
- 2 x 4 Sidewall, 16" O.C.
- 2 x 6 Floor Joists, 16" O.C.
- Plywood Floors
- Copper Wiring
- Smoke Detector w/Battery Backup & False Alarm Control
- Exterior Receptacle w/GFI Breaker
- Electrical Breaker Box
- Exterior Light at All Exterior Doors
- Iron Gas Piping w/Shut-off Valves



# SKYLINE®

BRINGING AMERICA HOME. BRINGING AMERICA FUN.

Visit us at our web site at [www.skylinecorp.com](http://www.skylinecorp.com)

For your comfort and safety, Skyline home designs are approved and inspected for conformance to Federal standards.

\* Dimensions stated to industry standards. Width and length dimensions are nominal and are not to be used for setup of home on site; consult selling retailers for exact specifications. Overall length does not include approximately four foot hitch. The square footage is approximate and based upon nominal exterior floor size. Room sizes are measured from floor ends and wall centers.

Because of progressive product improvement, all prices & specifications are subject to change without prior notice or obligation to Skyline Corporation.

Your Retailer, an independent contractor, who is not an agent of Skyline Corporation, is the party responsible for your purchase contract and any additions, deletions, alterations, or attachments made to or in your home.