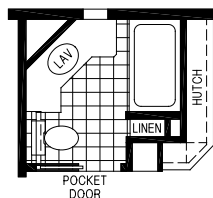
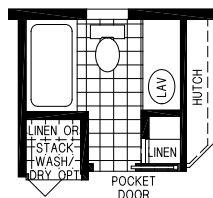


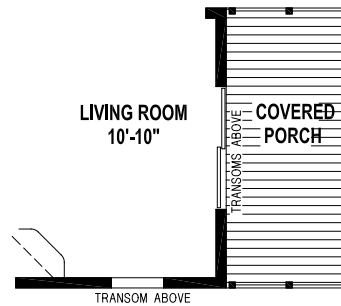
# 14 Series Floor Plan Shore Park Elite



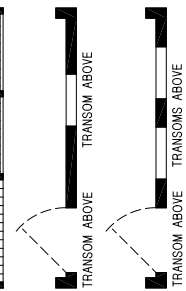
OPTION BATH



ALTERNATE OPTION BATH



OPT PORCH



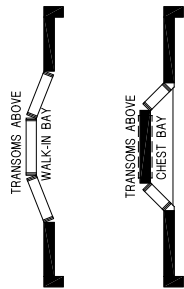
OPT PORCH  
ENDWALLS



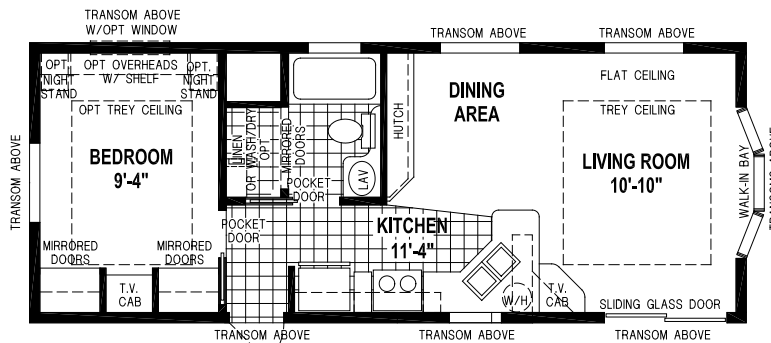
OPTION CABINETRY



OPTION BAY



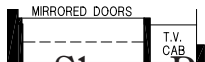
OPTION REAR BAYS



3104E/3514 1BEDROOM



OPTION  
FRONT BAY



ALTERNATE WARDROBE

Your local Shore Park Elite dealer is:



# Shore Park® Elite

## 14 Series

### Standard Features

#### LIVING AREAS

- Upgrade Carpet
- Drapes w/2" Faux Blinds
- Phone Jack
- TV Jack
- Chandelier Dining Light
- Vertical Blinds at Sliding Glass Door

#### KITCHEN

- Raised Panel Cabinet Doors w/Hardware & Residential Hidden Hinges
- Drawer Over Door Base Cabinet Construction
- Lined Overhead Cabinets w/Adjustable Shelves
- Two Shelves in Base Cabinet
- Counter Top Ceramic Tile Backsplash (Single Row)
- Single Lever High Rise Waterfall Faucet at Sink w/Sprayer
- 20 Cu. Ft. Side by Side Frost Free Refrigerator w/ Ice & Water Dispenser
- Spacemaker Dishwasher
- 30" Self Cleaning Glass Top Electric Range w/ Spacemaker Microwave/Range Hood
- Valance w/2" Faux Blinds
- Ceramic Backsplash Behind Cooking Area

#### BATHROOMS

- Raised Panel Cabinet Doors w/Hardware & Residential Hidden Hinges
- Medicine Cabinet w/Decorative Mirror
- Fiberglass Tub w/Full Surround
- Lav. Top Ceramic Tile Backsplash (Single Row)
- Dual Handle Lav Faucet
- Privacy Locks
- Towel Bar & Paper Holder
- Power Vent Fan w/Light
- Elongated China Commodes
- China Sink w/Overflow & Pop-Up Drain
- Single Lever Tub Faucet

#### BEDROOMS

- Upgrade Carpet
- Drapes w/2" Faux Blinds
- Mirrored Wardrobe Doors w/Drawers Below
- Ventilated Wire Shelving
- Phone Jack
- TV Jack

#### ADDITIONAL FEATURES

- Flat Ceiling Throughout
- ½" Drywall Throughout
- Wire for Paddle Fan
- 30 Year Architectural Shingles
- Vinyl Lap Siding
- Water Shut-off Valves Throughout
- Textured Ceiling
- Detachable Hitch
- 6lb. Carpet Pad w/Tack Strip
- Overhead Duct System w/Ceiling Air Diffusers
- 20 Gal. Water Heater
- 9-Lite Rear Door
- Deadbolt at Rear Door
- Sliding Glass Door (Insulated)
- Single Hung Vinyl Windows (Insulated)
- 15" Transom Window Above all Doors and Windows (Except Bathrooms)
- Egress Windows in Bedrooms
- Insulation: (R-38 Roof, R-33 Floor, R-19 Walls) The Higher the "R-Value" the Greater the Insulation Power
- 8'-6" Sidewall Height
- 2 x 6 Sidewall, 16" O.C.
- 2 x 6 Floor Joists, 16" O.C.
- Plywood Floors
- Copper Wiring
- Smoke Detector w/Battery Backup & False Alarm Control
- Exterior Receptacle w/GFI Breaker
- Electrical Breaker Box
- Exterior Light at All Exterior Doors
- Marble Window Sills



**SKYLINE**®

BRINGING AMERICA HOME. BRINGING AMERICA FUN.

Visit us at our web site at [www.skylinecorp.com](http://www.skylinecorp.com)



For your comfort and safety, Skyline home designs are approved and inspected for conformance to Federal standards.

\* Dimensions stated to industry standards. Width and length dimensions are nominal and are not to be used for setup of home on site; consult selling retailers for exact specifications. Overall length does not include approximately four foot hitch. The square footage is approximate and based upon nominal exterior floor size. Room sizes are measured from floor ends and wall centers.

Because of progressive product improvement, all prices & specifications are subject to change without prior notice or obligation to Skyline Corporation.

Your Retailer, an independent contractor, who is not an agent of Skyline Corporation, is the party responsible for your purchase contract and any additions, deletions, alterations, or attachments made to or in your home.